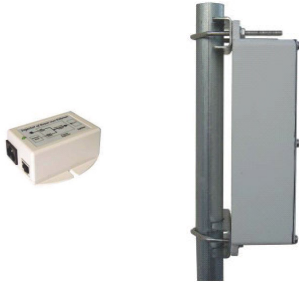


Outdoor Access Point AP-B AP-24 AP-2415 AP24X



High Power All in One Access Point- Hot Spot

The AP-Series are ideal cost-effective outdoor wireless networking solutions for WISP service companies, and corporate branches. The AP-Series have been designed from the beginning to give carrier class quality service, therefore they can do long distance links in the toughest environments with outstanding stability.

AP-Series can be used as stand-alone Access Points, or to build Hot Spot Systems. AP Series are equipped with one Ethernet port, that can be connected to a switch or an access Point without the need to install a router. This feature represents significant savings on hardware costs.

AP Series use OFDM technology in the 5.8/2.4 GHz license free bands; and OFDM can take advantage of reflected RF signals. Hence it is now possible to connect locations you may have thought were inaccessible due to line of sight barriers.

Most features of the AP are pre-configured and automatically adapt to the environment, making configuration and use very simple. The AP-A supports VLAN, transparent Bridge and comes with robust management features, such as NAT, DHCP Client, DHCP Server, IP Routing, RIP2 and SNMP. These features and its processing capacity make the OR 12 a unique product in the outdoor wireless market.

Hardware Highlights

- 5.8 Ghz or 2.4 GHz OFDM
- 1 Ethernet, 1 RF

- 300 MHz-64 RAM: AP-B, AP-24
- 700 MHz- 64 MRAM: AP-2415, AP-24X
- Die Cast IP 66: AP-B, AP-24 AP-24X
- Antenna Enclosure: AP-2415

C-Class Router OS Software

- Transparent MAC Layer operation
- VLAN support
- Learning bridge that supports forwarding and filtering
- Durable outdoor case construction
- IP Routing
- Radius
- Polling
- Long Distance throughput
- Super packet Aggregation
- VoIP Support
- QoS

Radio Features

- Wireless data rates of up to 108 Mbits/sec
- Full bandwidth management/ CIR/ MIR
- 30 Mbs real throughput
- Wide Band: 5.1-5.3-5.8 GHz
- Radio link and antenna alignment diagnostics
- WEP hardware encryption standard
- Operating range up to 10 miles. (25 miles with amplified antennas)
- Output Power 100 Mw (AP-B)
- Output Power 600 Mw (AP-24, AP-2415)
- Output Power 800 Mw (AP-X)

Ethernet Features:

- 10/ 100 Dual Ethernet
- Power over Ethernet



AP2415

AP-Series



Wireless Carrier Class Solutions

Powered by MikroTik

www.wi-corp.com

AP-Series Specifications

Firmware Features

- Routing RIP 1 / 2, OSPF v2, BGP v4 (equal cost multi-path routing, policy based routing, firewall marked packet routing)
- PPP (ISDN, PPPoE, modem pool)
- RADIUS authorization and accounting
- AES Encryption
- Bridging (Client Only)
- Stateful Firewall and NAT
- VLAN
- DHCP
- Tunnels (PPTP (VPN), IPsec, EoIP, IPsec)
- IP traffic accounting, firewall actions logging
- Bandwidth Management (per IP / protocol / subnet / port, CBQ, RED, SFQ, byte FIFO, packet FIFO)
- Tools (ping, traceroute, bandwidth test, ping flood, telnet)
- Remote Administration & Upgrading
- Web cache- DNS Cache
- SNMP
- NTP (Network Time Protocol)
- LONG DISTANCE FEATURES: Super packet aggregation, Long Distance High throughput links

Radio Features

Spread spectrum method OFDM 80211 a, b, g+ wavemax nstreme
Frequency (User selectable): 2.4 Ghz – 5.3 GHz- 5.8 Ghz
Channels (User selectable) 5120- 6100 (5 Mhz Steps)
Channels (User selectable) 2412 – 2472 (Channels 1 to 13- 5 Mhz), 2484 (Channel 14), 2512- 2732 (Channels 15- 26- 20 Mhz)

5.8 GHz Power and sensitivity chart:

78 Mw - Wireless t. rates (Mb/sec) 108, 54, 48, 36, 24, 18, 12, 9, 6
5.8 GHz Wireless transmission rates (Mb/sec) 108, 54, 48, 36, 24, 18, 12, 9, 6
5.8 GHz Radio transmit power 17 dBm nominal @ 6 Mb/sec, 12 dBm nominal @ 54 Mb/sec
5.8 GHz Radio receive sensitivity -88 dBm @ 6 Mb/sec, -68 dBm @ 54 Mb/sec
600 Mw Amplified Wireless t. rates (Mb/sec) 108, 54, 48, 36, 24, 18, 12, 9, 6
2.4 GHz Radio transmit power 28 dBm
2.4 GHz Radio receive sensitivity -94 dBm
800 Mw Amplified Wireless t. rates (Mb/sec) 108, 54, 48, 36, 24, 18, 12, 9, 6
2.4 GHz Radio transmit power 29 dBm
2.4 GHz Radio receive sensitivity -94 dBm

System Hardware Features

Dimensions (RF unit) 9" x 7" x 3.5" (22.9 cm x 17.8 cm x 8.9 cm)
Weight (per RF unit) 4.5 lbs.
Shipping weight (complete package) Approx. 26 lbs. (standard package)
64 MB Memory-700 MHz processor: AP-B, AP-24
64 MB Memory- 700 MHz processor: AP-2415, AP-24X
Operating temperature -30°C to 55°C (-20°F to 131°F)- Storage temperature -30°C to 75°C (-20°F to 167°F)
Humidity 0% to 100% (Non-immersion rain)
Wall wart power supply included Yes, 110/240 VAC- Power design Carrier Class Power over Ethernet
Power required (at radio) +15 to +18 VDC (from included power supply)
Wired Network Interface (at PoE injector) RJ-45 10/100Base-T
Certification FCC
Warranty 1 year depot

More Information: info@wi-corp.com

AP-Series