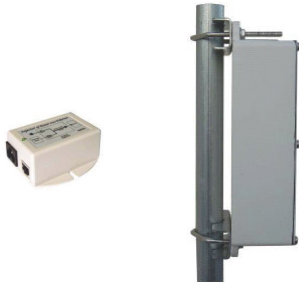


Remote Outdoor Router OR-11- 11A- 11X



Long distance ruggedized CPE

The OR-11 is an ideal cost-effective outdoor wireless networking solution for ISP service companies, and corporate branches. The OR-11 has been designed from the beginning to give carrier class quality service, therefore it can do long distance links in the toughest environments with outstanding stability.

The OR-11 can be used as a stand-alone Base Station client, or to build point-to-point links. The OR-11 is equipped with one Ethernet port, that can be connected to a switch or an access Point without the need to install a router. This feature represents significant savings on hardware costs.

The OR-11 uses OFDM technology operating in the 5.8/ 2.4 GHz license free bands. Because OFDM can take advantage of reflected RF signals, it is now possible to connect locations you may have thought were inaccessible due to line of sight barriers.

Most features of the OR-11 are pre-configured and automatically adapt to the environment, making configuration and use very simple. The OR-11 supports VLAN, transparent Bridge and comes with robust management features, such as NAT, DHCP Client, DHCP Server, IP Routing, RIP2 and SNMP. These features and its processing capacity make the OR 11 a unique product in the outdoor wireless market.

Hardware Highlights

- 5.8 Ghz or 2.4 GHz OFDM
- 1 Ethernet, 1 RF
- 300 MHz- 32 MRAM Processor
- Ideal for Building to Building Links

- IP 66: Engineered for reliability even in the hottest regions of the world

C-Class Router OS Software (Client Only)

- Transparent MAC Layer operation
- VLAN support
- Learning bridge that supports forwarding and filtering
- Durable outdoor case construction
- IP Routing
- Spanning Tree Protocol
- Polling
- Long Distance throughput
- Super packet Aggregation
- VoIP Support
- QoS

Radio Features

- Wireless data rates of up to 54 Mbits/sec
- Full bandwidth management/ CIR/ MIR
- 20 Mbs real throughput
- No FCC license required
- Wide Band: 5.1-5.3-5.8 GHz
- Radio link and antenna alignment diagnostics
- WEP hardware encryption standard
- Operating range up to 10 miles. (25 miles with amplified antennas)
- Output Power 200 mW (OR-11)
- Output Power 500 mW(OR-11A)
- Output Power 600 mW (OR-11X)

Ethernet Features:

- 10/ 100 Dual Ethernet (802.3 Compliant)
- Power over Ethernet



OR 11



Wireless Carrier Class Solutions



www.wi-corp.com

OR-11-11A-11X Specifications

Firmware Features

- Routing RIP 1 / 2, OSPF v2, BGP v4 (equal cost multi-path routing, policy based routing, firewall marked packet routing)
- PPP (ISDN, PPPoE, modem pool)
- RADIUS authorization and accounting
- AES Encryption
- Bridging (Client Only)
- Stateful Firewall and NAT
- VLAN
- DHCP
- Tunnels (PPTP (VPN), IPIP, EoIP, IPsec)
- IP traffic accounting, firewall actions logging
- Bandwidth Management (per IP / protocol / subnet / port, CBQ, RED, SFQ, byte FIFO, packet FIFO)
- Tools (ping, traceroute, bandwidth test, ping flood, telnet)
- Remote Administration & Upgrading
- Web cache- DNS Cache
- SNMP
- NTP (Network Time Protocol)
- LONG DISTANCE FEATURES: Polling, Super packet aggregation, Long Distance High throughput links

Radio Features

- Spread spectrum method OFDM 80211 a, b, g+ wavemax nstreme
- Frequency (User selectable): 2.4 Ghz – 5.3 GHz- 5.8 Ghz
- Channels (User selectable) 5120- 6100 (5 Mhz Steps)
- Channels (User selectable) 2412 – 2472 (Channels 1 to 13- 5 Mhz), 2484 (Channel 14), 2512- 2732 (Channels 15- 26- 20 Mhz)
- 5.8 GHz Power and sensitivity chart:**
- 200 Mw OR11- 5.8 GHz Wireless t. rates (Mb/sec) 108, 54, 48, 36, 24, 18, 12, 9, 6**
- 5.8 GHz Wireless transmission rates (Mb/sec) 108, 54, 48, 36, 24, 18, 12, 9, 6
- 5.8 GHz Radio transmit power 23 dBm nominal @ 6 Mb/sec, 12 dBm nominal @ 54 Mb/sec
- 5.8 GHz Radio receive sensitivity -94 dBm @ 6 Mb/sec, -74 dBm @ 54 Mb/sec
- 500 Mw Amplified OR11A- 5.8 GHz Wireless t. rates (Mb/sec) 108, 54, 48, 36, 24, 18, 12, 9, 6**
- 5.8 GHz Radio transmit power 26 dBm nominal @ 24 Mb/sec, 21 dBm nominal @ 54 Mb/sec
- 5.8 GHz Radio receive sensitivity -92 dBm @ 6 Mb/sec, -73 dBm @ 54 Mb/sec
- 600 Mw Amplified OR11X- 5.8 GHz Wireless t. rates (Mb/sec) 108, 54, 48, 36, 24, 18, 12, 9, 6**
- 5.8 GHz Radio transmit power 28 dBm
- 5.8 GHz Radio receive sensitivity -94 dBm @ 6 Mb/sec, -74 dBm @ 54 Mb/sec

System Hardware Features

- Dimensions (RF unit) 9" x 7" x 3.5" (22.9 cm x 17.8 cm x 8.9 cm)
- Weight (per RF unit) 4.5 lbs.
- Shipping weight (complete package) Approx. 26 lbs. (standard package)
- 32 MB Memory- 300 MHz processor
- Operating temperature -30°C to 55°C (-20°F to 131°F)- Storage temperature -30°C to 75°C (-20°F to 167°F)
- Humidity 0% to 100% (Non-immersion rain)
- Wall wart power supply included Yes, 110/240 VAC- Power design Carrier Class Power over Ethernet
- Power required (at radio) +15 to +18 VDC (from included power supply)
- Wired Network Interface (at PoE injector) RJ-45 10/100Base-T
- Certification FCC
- Warranty 1 year depot

More Information: info@wi-corp.com

OR 11