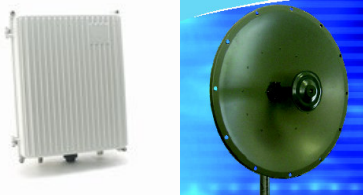


## Turbo Link Full Duplex Backhaul Series TL-5200 TL52LR TL5216



**Full Duplex 70 Mbps  
Long Range**

TL-SERIES is the ideal outdoor wireless backhaul solution for ISP service companies, and corporate branches. Designed from the beginning to give carrier class type services, TL-SERIES can do long distance links in the toughest environments with outstanding stability.

Equipped with one Ethernet port, the TL-SERIES can connect to a hub or to a switch or an access Point without the need to install a router. This represents significant savings on hardware costs.

The TL-SERIES uses full duplex OFDM technology operating in the 5.1, 5.3, 5.8 GHz license free bands. Because OFDM can take advantage of reflected RF signals, it is now possible to connect locations you may have thought were inaccessible due to line of sight barriers.

Most features of the TL-SERIES are pre-configured and automatically adapt to the environment, making configuration and use very simple. TL-SERIES support VLAN, transparent Bridge and come with robust management features, such as NAT, DHCP Client, DHCP Server, IP Routing, RIP2 and SNMP. These features and its processing capacity make the TL a unique product in the outdoor wireless market.

### Hardware Highlights

- 700 MHz Processor
- 128M RAM
- T52LR: 800 MHz-256 RAM
- Engineered for reliability even in the hottest regions of the world
- Die Cast ruggedized

### CCLASS Super Range Software

- Transparent MAC Layer operation
- VLAN support
- Learning bridge that supports forwarding and filtering
- AES Encryption
- IP Routing
- Spanning Tree Protocol
- Long Distance throughput
- Super packet Aggregation
- VoIP Support
- QoS

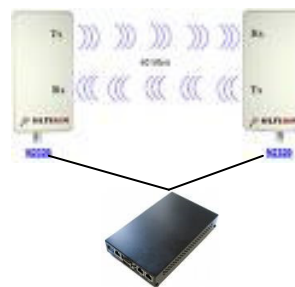
### Radio Features

- **Full Duplex**
- **70 Mbps real throughput**
- Wide Band 5.1-5.3-5.8 GHz support
- Full duplex system
- Radio link and antenna alignment diagnostics
- AES encryption standard
- Operating range up to 50 miles.
- **High Power: 28 Dbm**

### Ethernet Features:

- 10/ 100 Dual Ethernet
- Power over Ethernet

**5211 = IDU + ODU**



# TL Series



Wireless Carrier Class Solutions



www.wi-corp.com

## TL-Series Specifications

### Firmware Features

- Routing RIP 1 / 2, OSPF v2, BGP v4 (equal cost multi-path routing, policy based routing, firewall marked packet routing)
- PPP (ISDN, PPPoE, modem pool)
- AES Encryption
- Bridging- WDS- MESH Topologies
- Stateful Firewall and NAT
- VLAN
- DHCP
- Tunnels (PPTP (VPN), IPIP, EoIP, IPsec)
- IP traffic accounting, firewall actions logging
- Bandwidth Management (per IP / protocol / subnet / port, CBQ, RED, SFQ, byte FIFO, packet FIFO)
- Tools (ping, traceroute, bandwidth test, ping flood, telnet)
- DNS cache
- Web cache
- SNMP
- NTP (Network Time Protocol)
- Remote administration and upgrading
- LONG RANGE- HIGH THROUGHPUT FEATURES: Super packet aggregation

### Radio Features

- OFDM 80211.a, b, g
- Frequency (User selectable) IEEE 802.11b and g, 2.192- 2.507 GHz
- Channels (User selectable) 2.192- 2.507 (5 to 40 Mhz Steps)
- Frequency (User selectable) IEEE 802.11a, 5 GHz
- Channels (User selectable) 4900- 6100 (5 to 40 Mhz Steps)
- Power and sensitivity chart:**
- 5.8 GHz Radio transmit power 28 dBm nominal
- 5.8 GHz Radio receive sensitivity -94 dBm @ 6 Mb/sec, -74 dBm @ 54 Mb/sec

### System Hardware Features

- Dimensions (RF unit) 9" x 7" x 3.5" (25.9 cm x 25.9 cm x 7.9 cm)
- Weight (per RF unit) 3.5 lbs.
- Shipping weight (complete package) Approx. 26 lbs. (standard package)
- 128 MB Memory- 700 MHz processor (TL5200- TL5216)
- 256 MB Memory- 800 MHz processor (TL52LR)
- Operating temperature -30°C to 55°C (-20°F to 131 °F)- Storage temperature -30°C to 75°C (-20°F to 167 °F)
- Humidity 0% to 100% (Non-immersion rain)
- Wall wart power supply included Yes, 110/240 VAC
- Power design: 24 V Carrier Class Power over Ethernet-
- Wired Network Interface (at PoE injector) RJ-45 10/100Base-T
- Certification: Part 15 FCC
- Warranty 1 year depot

More Information: [info@wi-corp.com](mailto:info@wi-corp.com) [www.wi-corp.com](http://www.wi-corp.com)

# TL Series